

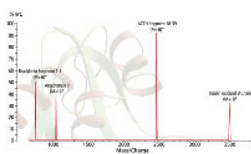
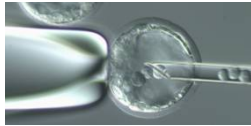
2012 BioMedicine in 4D

Integrated-omics and Systems Microscopy

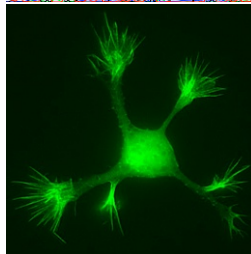
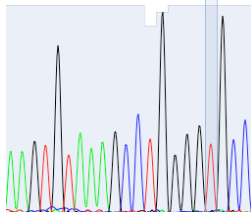
Cores – Your Shared Research Support Network

Wednesday, March 21, 11:00am to 6:00pm

Shared resource colloquium: Toward better integrated visualization and characterization



A A G T G T A A A G C C T G G G G G G C C C
K C R A H G A



11:00am Joe Gray, PhD Welcome

11:05am *Jayashree Kalpathy-Cramer, PhD "Developing novel biomarkers for breast cancer and sarcoma - Integrating advanced imaging with genomic data"

11:30am Stefanie Kaech, PhD "Seeing more clearly: A comparison of confocal and structured illumination microscopy" Advanced Light Microscopy Shared Resources

11:55am Larry David, PhD "Label-free quantitation of complex protein mixtures by mass spectrometry" Proteomics Shared Resources

12:20pm Lunch Break

1:00pm Shared Resources Introduction Section 1

Dennis Koop, PhD Bioanalytical/Pharmacokinetics Shared Resource

Chris Harrington, PhD Gene Microarray Shared Resource

1:25pm Indika Rajapakse, PhD "Spatial dynamics of genome organization"

1:50pm Bob Searles, PhD "Production of genomic data – The support infrastructure in the Integrated Genomics Laboratory" Massively Parallel Sequencing Core

2:15pm *Peter Gillespie, PhD "Molecular characterization of hair-cell mechanotransduction: A reduced protein complement assists systems-level analysis"

2:40pm Coffee break

2:55pm Shared Resources Introduction Section 2

Michelle Hribar, PhD Biomedical Informatics Shared Resource

Lev Fedorov, PhD Modern Transgenic Technologies -Transgenic Mouse Models Shared Resource

3:20pm Nabil Alkayed, PhD "Protein trafficking and organelle dynamics in health and disease"

3:45pm Martin Pike, PhD "Increased anti-angiogenic efficacy with combined molecular targeting: Perfusion MRI studies of intracranial glioma"

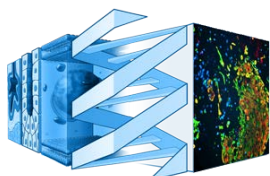
4:10pm Shared Resources Introduction Section 3

John Hunt, MSEE Electronics and Instrument Design Shared Resource

Perry Gliessman Advanced Computing Center Shared Resource

Phil Streeter, PhD Flow Cytometry Shared Resource

Afternoon Reception 4:45pm – Please join us for finger food and refreshments at the end of the day with shared resource core directors. Discuss your research needs and what shared resources can do for you.



March 21–23 *Symposium & Posters*
OHSU Center for Spatial Systems Biomedicine
For registration go to the OCSSB website at:
<http://www.ohsu.edu/ocssb>

